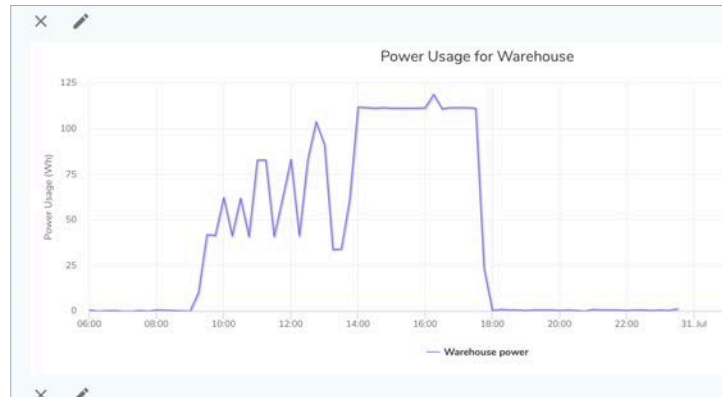


Energy Monitoring

Avi-on’s energy monitoring service provides complete data collection every 15 minutes on every device (see compatible hardware below), as well as a complete record of device dimming status and motion sensor triggers. The data is available in real time through the Avi-on energy management portal. The data can be viewed in the portal, or exported in a variety of formats including .CSV, XLS and PDF. The data is also available in real time via the Avi-on Web Services API.



The service provides a variety of critical insights into ongoing fixture performance, facility utilization, as well as qualifying for DLC 5.0 requirements and specific utility programs that require measured energy data.

Subscription Details

Energy monitoring is available through subscription to the Avi-on Energy Monitoring Service. This service is enabled by your Avi-on commissioning team and requires no other configuration than using Avi-on or Avi-on certified energy monitoring capable fixture controllers. Avi-on supports annual subscriptions and prepaid 5 year subscriptions for the energy monitoring service.

All 15 minute energy data is stored on the Avi-on servers for the duration of the subscription. Data is not deleted at the expiration of their subscription. Users are given the opportunity to archive their data if they choose not to extend their subscription.

Once enabled, simply log into the Energy Management Dashboard at <https://analytics.avi-on.com> with your regular Avi-on username and password. There you will select your location and be able to analyze energy consumption and download reports.

Hardware Requirements

The energy monitoring service is paired with the Avi-on fixture and circuit control hardware with measured energy capability. Currently the Internal Relay Adaptor (PN) and the External Power Pack (PN) both include measured energy capability.

In addition to the fixture adaptor with measured energy capability, it is necessary to have a remote access bridge (PN) to connect the local network to the Avi-on cloud service.

Once connected and Avi-on has enabled the account for energy data collection, the data will begin flowing to the cloud automatically. There are no other parameters or user setup required.

To order please contact Avi-on sales at **(877) AVION-US**, (877) 284-6687 or prosales@avi-on.com for information on becoming an Avi-on partner and order details.

Project		Location/ Type	
---------	--	-------------------	--

Specifications

Example of consumption accuracy

Unit	50 mA Load	No Load
PL7211 Return Value	6.516 W	0.4687 W
Power-Meter Value	6.536 W	0.468 W
Accuracy	0	Almost 0%

Avi-on Data Export API and analytics page

It is possible to connect a real time data export from the Avi-on cloud service to third party platforms and applications. Click the following link for documentation of the Avi-on data API:

<https://documenter.getpostman.com/view/6065583/RzfmEmUY?version=latest#06d886b3-e9cd-4acc-a133-a73ddd7b4132>

Energy Reporting Capabilities:

The energy data cloud dashboard includes an array of reporting and data export capabilities including: .CSV, XLS and PDF.



Figure 1. Dashboard

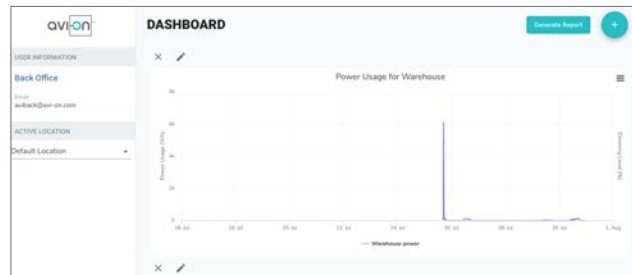


Figure 2. Dashboard

ALL PRODUCT, PRODUCT SPECIFICATIONS AND DATA ARE SUBJECT TO CHANGE WITHOUT NOTICE TO IMPROVE RELIABILITY, FUNCTION OR DESIGN OR OTHERWISE. The information contained herein is believed to be reliable. Avi-on makes no warranty, representation or guarantee regarding the information contained herein, the suitability of the products for any particular purpose, or the continuing production of any product. Avi-on assumes no responsibility or liability whatsoever for the use of the information contained herein. The information contained herein, or any use of such information does not grant, explicitly or implicitly, to any party any patent rights, licenses, or any other intellectual property rights, whether with regard to such information itself or anything described by such information.